

NOTICE

Weight and balance or operating limitation changes shall be entered in the appropriate aircraft record. An alteration must be compatible with all previous alterations to assure continued conformity with the applicable airworthiness requirements.

8. Description of Work Accomplished

(If more space is required, attach additional sheets. Identify with aircraft nationality and registration mark and date work completed.)

1. Removed GILL G-35 Battery from existing battery box under right passenger seat.
2. Installed B & C Specialty Products kit to accept a B & C Specialty Model BC 100-1, 12 Volt, 25 ampere-hour immobilized electrolyte, sealed lead-acid battery as replacement for existing battery. Installation was performed in accordance with the sample installation manual from B & C Specialty Ca, Document # FK 500-6 Rev A, dated Aug. 27, 1993 (See Sheet 1).
3. All wiring up-graded and installed in accordance with AC 43.13-1A SEC3, Fig. 11-7.
4. No significant Change of existing weight and balance of aircraft.

*****END*****

RECEIVED

APR 2 - 1997

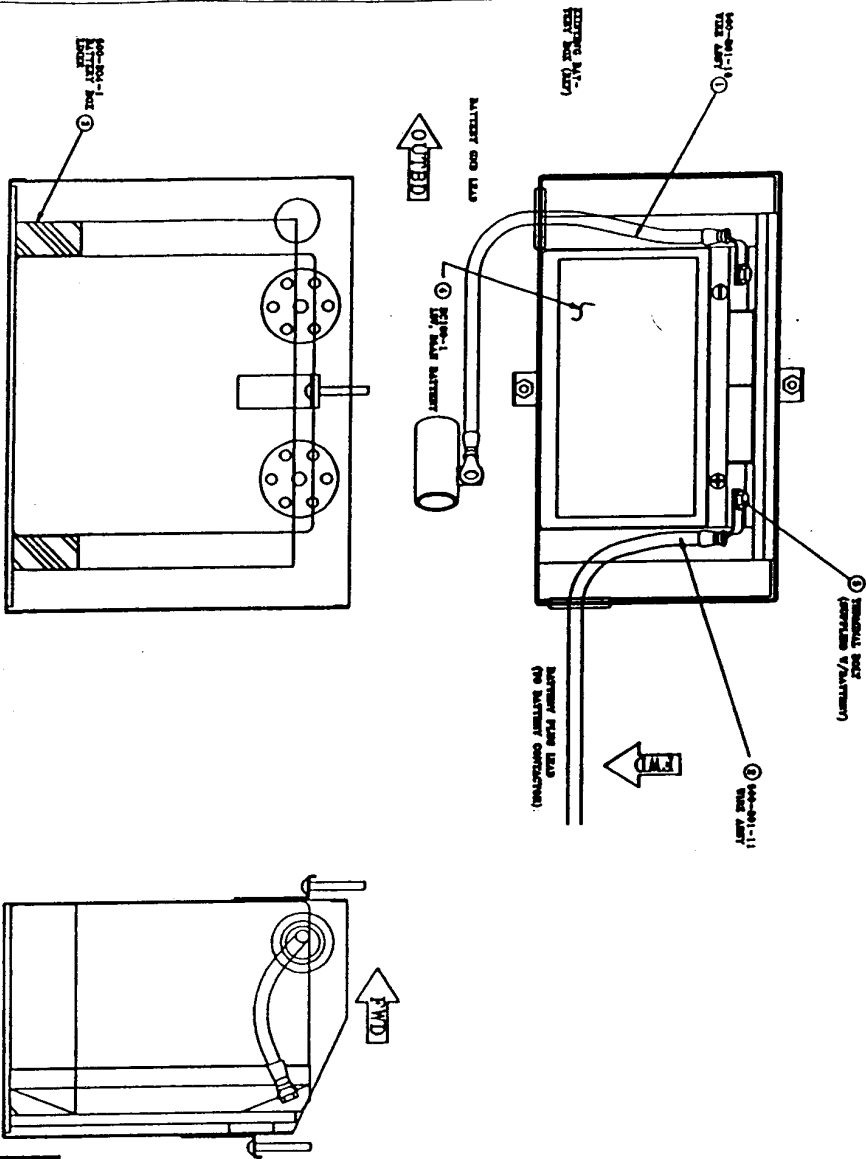
FAA
SW-FSDO-11
(LIT)

		AS1	A2
3		AS1	A4
		AS1	A5
		AS1	A6
		AS1	A7
		AS1	A8

Additional Sheets Are Attached

NOTES:

1. RECOMMENDED CHARGING VOLTAGE: 14.6 ± .2 volts.
2. TERMINAL INSTALLATION TORQUE: 80--90 IN.-LB.
3. CAPACITY: 25 AMPERE-HOURS
4. WEIGHT: 22.5 POUNDS
5. OPERATING POSITION: ANY
6. TECHNOLOGY: SEALED LEAD-ACID, IMMOBILIZED ELECTROLYTE. CONTAINS NO FREE LIQUID.
7. TEMPERATURE - OPERATING: -40C TO +60C.
STORAGE: -65C TO +60C.
8. ALTITUDE: -1000 TO 30,000 FEET
9. COLD CRANKING: 300 AMPS MINIMUM FOR 30 SECONDS AT NOT LESS THAN 8.0 VOLTS AT -20 DEG C.
10. TERMINALS: M6X1.0, HEX-HEAD, STAINLESS STEEL BOLT, 12 MM LONG.
11. WARNING - CONTAINS HAZARDOUS MATERIALS (LEAD AND SULFURIC ACID). CASE IS SEALED AND SHOULD NOT BE OPENED. FAULT CURRENTS OF UP TO 1200 AMPS MAY BE EXPECTED IF BATTERY IS INADVERTENTLY SHORTED. ALL BATTERY HANDLING SAFETY PRACTICES SHOULD BE OBSERVED.
12. APPROVED DISPOSAL: HANDLE PER LOCAL REGULATIONS LIKE ANY OTHER LEAD-ACID, VEHICULAR BATTERY.
13. CAUTION - OBSERVE POLARITY WHEN INSTALLING. REVERSAL OF LEADS WILL DAMAGE OTHER DEVICES IN THE AIRCRAFT.
14. CHARGING CURRENT LIMIT: NONE



BATTERY, 12V, 25 AH

UNLESS OTHERWISE SPECIFIED		DRAWING NO.	
DIMENSIONS ARE IN INCHES		REVISION 3	
TOLERANCES ARE .010		DATE 7/4/13	
DECIMAL GAUGE = 3.0010		SHEET 1 OF 1	
ANGLES = 30.3 DEGREES			
DESIGNER	NAME	TITLE	
DRAWN	DATE	B & C Specialty Products	
CHECKED		P.O. Box B, Newton, Kansas 67114	
PROJECT		ENVELOPE DRAWING	
		BATTERY, 14V, 25 A.H.	
		SEALED LEAD ACID	