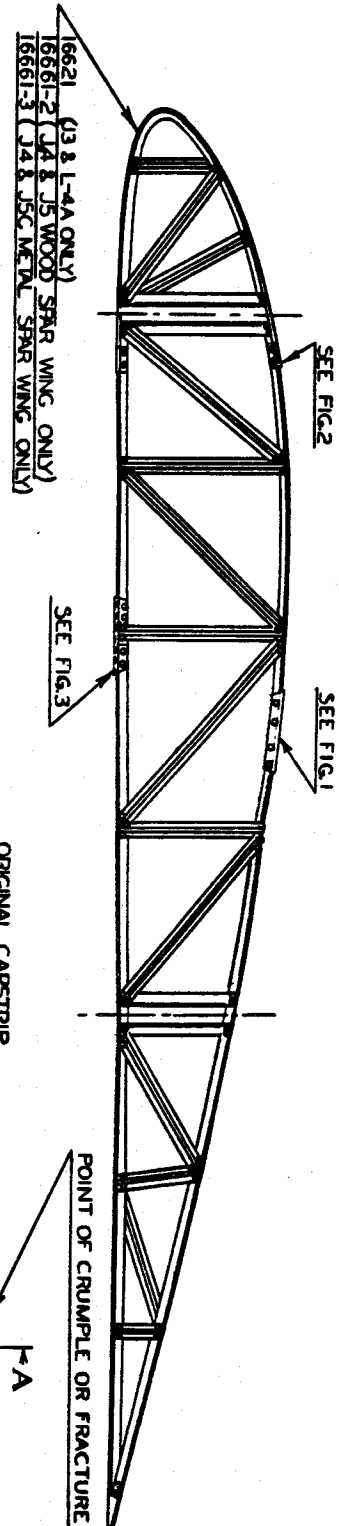


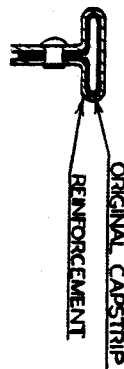


S. M. No. 10

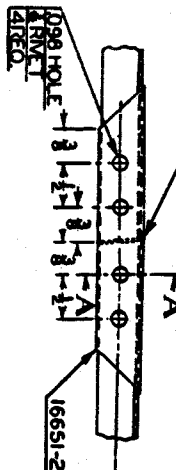


0.09 HOLE
& RIVET
& RIVET
& RIVET

NOTE: CAPSTRIP MAY BE SPLICED OR REINFORCED ANYWHERE EXCEPT FORWARD OF FRONT SPAR OR AT A CLUSTER.



NOTE: FORM REINFORCEMENT OVER CAPSTRIP AND RIVET TO WEB OF CAPSTRIP AS SHOWN.

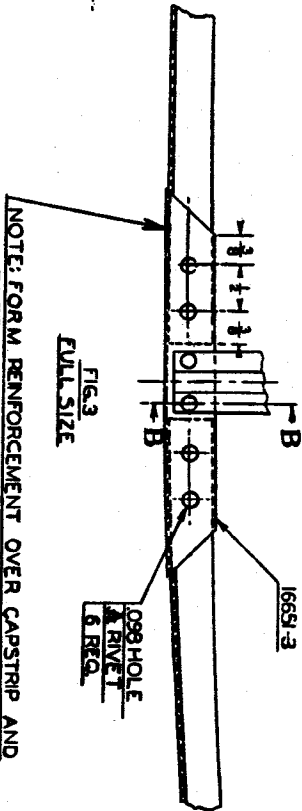
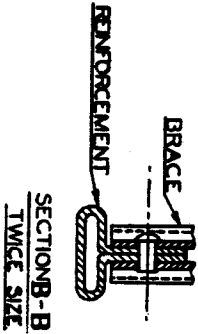


NOTE: THIS REPAIR MAY BE USED AT ANY POINT ON CAPSTRIP EXCEPT AT CLUSTERS OR FORWARD OF FRONT SPAR.

1668-3	REPAIR SECTION (1/4 1/8 WOOD)
16661-2	REPAIR SECTION (SPAR WING ONLY)
16651-3	3/8 1/8 L.P.S. ALUM BRIDGE RIVET
16651-2	REINFORCEMENT
16621	REPAIR SECTION (1-4A ONLY)

Rib Repair Diagram

PIPER AIRCRAFT CORP.
LOCK HAVEN, PENNA.
SERVICE DEPARTMENT



NOTE: FORM REINFORCEMENT OVER CAPSTRIP AND RIVET TO WEB OF CAPSTRIP AS SHOWN.