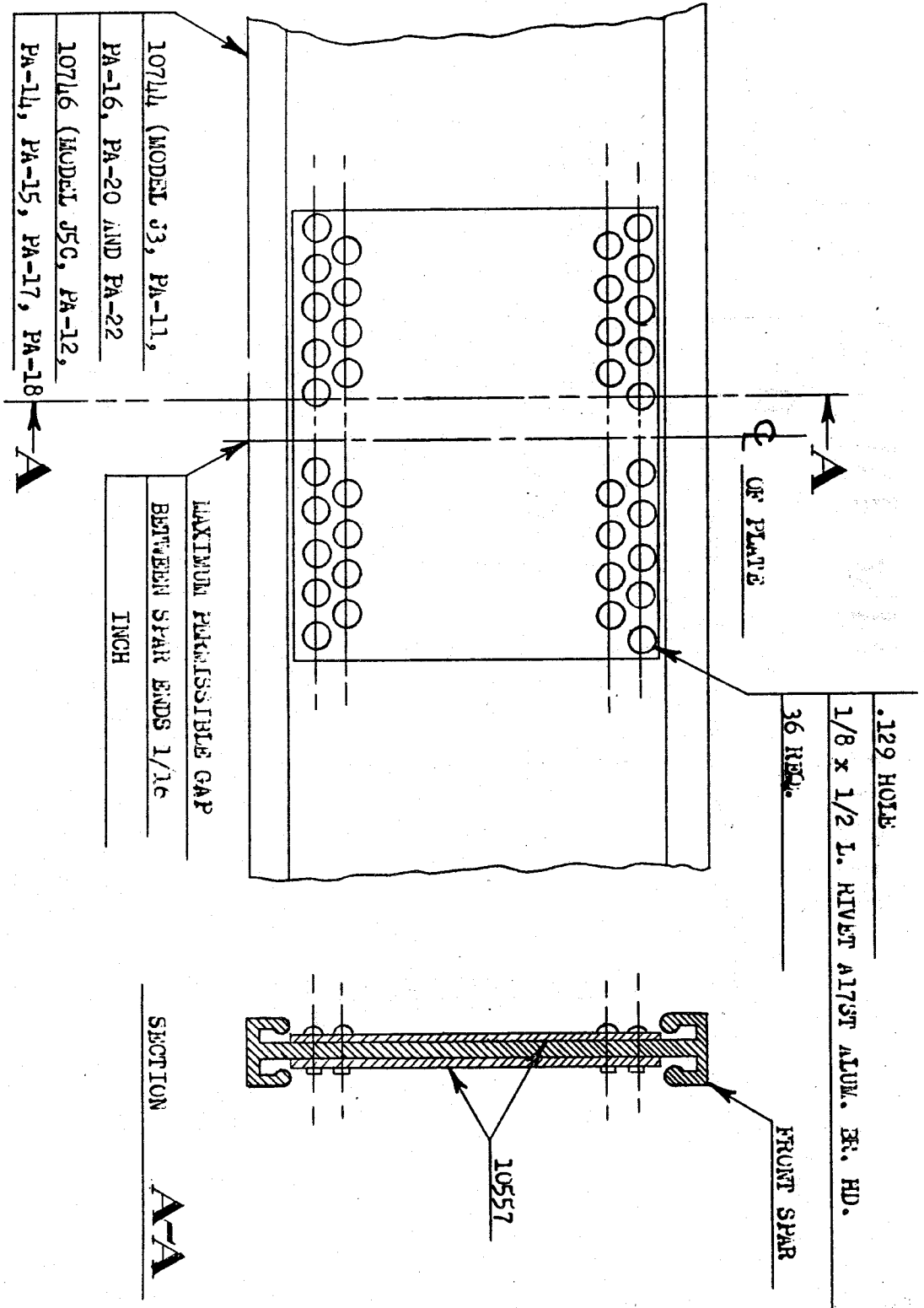


SERVICE



MEMO

S. M. No. 3



SPLICE-FRONT SPAR

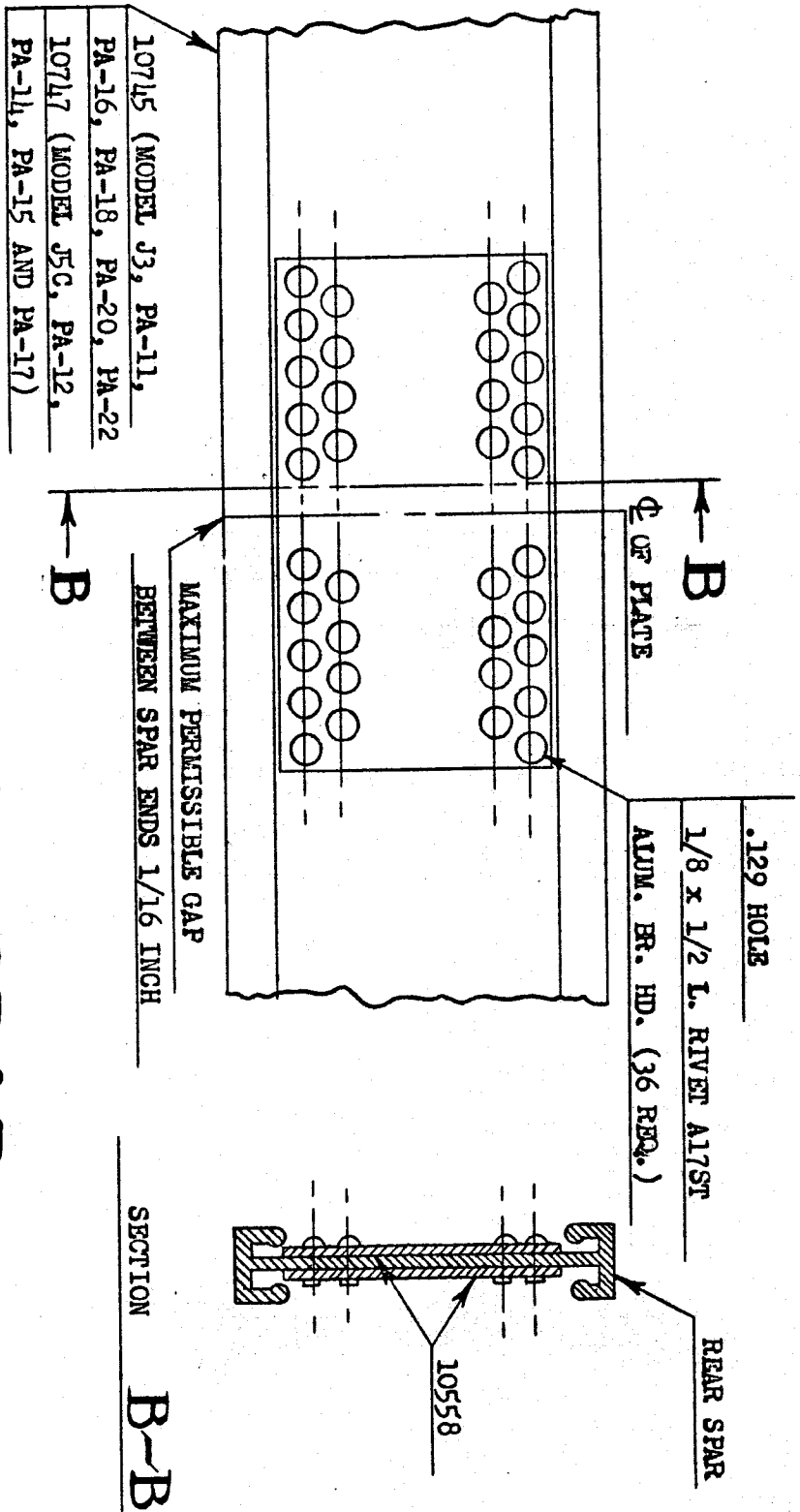
THIS SPLICE TO BE USED OUTBOARD OF STRUT POINT ONLY

Front spar splice kit - J3, PA-11, PA-16, PA-20 & PA-22 - Part No. 750 736
 Rear spar splice kit - J3, PA-11, PA-16, PA-18, PA-20 & 22 - Part No. 750 737

Front spar splice kit - PA-12, J5C, PA-14, 15, 17 & 18 - Part No. 750 738
 Rear spar splice kit - PA-12, J5C, PA-14, 15 & 17 - Part No. 750 739

The above kit consists of spar splice plates, spar splice section, and spar splice rivets

NOTE: There is no tolerance set as to how far the metal spar can be bent and still straighten cold. However, the metal spar can be straightened so long as there are no buckles or kinks in same.



SPLICE - REAR SPAR

THIS SPLICE TO BE USED OUTBOARD OF STRUPT POINT ONLY